

Attendance Policy

Forest Skies Federation

**Approved by:**

Governing Body
Miss N Haughton
Miss J Bingwa
Mr M Davies

Date: September 2024

Last reviewed on:

July 2024

**Next review due
by:**

July 2025

Contents

1. Aims	3
2. Legislation and guidance	3
3. Roles and responsibilities	3
4. Recording attendance	7
5. Authorised and unauthorised absence	10
6. Strategies for promoting attendance.....	13
8. Attendance monitoring	14
9. Monitoring arrangements	16
10. Links with other policies	16
Appendix 1: attendance codes	17
Appendix 2: Forest Skies Flow Chart.....	15
Appendix 3: Absence Request form	16

1. Aims

This policy aims to show our commitment to meeting our obligations with regards to school attendance, including those laid out in the Department for Education's (DfE's) statutory guidance on [working together to improve school attendance \(applies from 19 August 2024\)](#), through our whole-school culture and ethos that values good attendance, including:

- Setting high expectations for the attendance and punctuality of all pupils
- Promoting good attendance and the benefits of good attendance
- Reducing absence, including persistent and severe absence
- Ensuring every pupil has access to the full-time education to which they are entitled
- Acting early to address patterns of absence
- Building strong relationships with families to make sure pupils have the support in place to attend school

We will also promote and support punctuality in attending lessons.

2. Legislation and guidance

This policy is based on the Department for Education's (DfE's) statutory guidance on [working together to improve school attendance \(applies from 19 August 2024\)](#) and [school attendance parental responsibility measures](#). The guidance is based on the following pieces of legislation, which set out the legal powers and duties that govern school attendance:

- Part 6 of the [Education Act 1996](#)
- Part 3 of the [Education Act 2002](#)
- Part 7 of the [Education and Inspections Act 2006](#)
- [The Education \(Pupil Registration\) \(England\) Regulations 2006 \(and 2010, 2011, 2013, and 2016 amendments\)](#)
- [The School Attendance \(Pupil Registration\) \(England\) Regulations 2024](#)
- [The Education \(Penalty Notices\) \(England\) \(Amendment\) Regulations 2013 and the 2024 amendment](#)

It also refers to:

- [School census guidance](#)
- [Keeping Children Safe in Education](#)
- [Mental health issues affecting a pupil's attendance: guidance for schools](#)

3. Roles and responsibilities

3.1 The governing board

The governing board is responsible for:

- Setting high expectations of all school leaders, staff, pupils and parents

- Making sure school leaders fulfil expectations and statutory duties, including:
 - Making sure the school records attendance accurately in the register, and shares the required information with the DfE and local authority
 - Making sure the school works effectively with local partners to help remove barriers to attendance, and keeps them informed regarding specific pupils, where appropriate
- Recognising and promoting the importance of school attendance across the school's policies and ethos
- Making sure the school's attendance management processes are delivered effectively, and that consistent support is provided for pupils who need it most by prioritising staff and resources
- Making sure the school has high aspirations for all pupils, but adapts processes and support to pupils' individual needs
- Regularly reviewing and challenging attendance data and helping school leaders focus improvement efforts on individual pupils or cohorts who need it most
- Working with school leaders to set goals or areas of focus for attendance and providing support and challenge
- Monitoring attendance figures for the whole school and repeatedly evaluating the effectiveness of the school's processes and improvement efforts to make sure they are meeting pupils needs
- Where the school is struggling with attendance, working with school leaders to develop a comprehensive action plan to improve attendance
- Making sure all staff receive adequate training on attendance as part of the regular continued professional development offer, so that staff understand:
 - The importance of good attendance
 - That absence is almost always a symptom of wider issues
 - The school's legal requirements for keeping registers
 - The school's strategies and procedures for tracking, following up on and improving attendance, including working with partners and keeping them informed regarding specific pupils, where appropriate
- Making sure dedicated training is provided to staff with a specific attendance function in their role, including in interpreting and analysing attendance data
- Holding the headteacher to account for the implementation of this policy

3.2 The headteacher

The headteacher is responsible for:

- The implementation of this policy at the school
- Monitoring school-level absence data and reporting it to governors

- Supporting staff with monitoring the attendance of individual pupils
- Monitoring the impact of any implemented attendance strategies
- Issuing fixed-penalty notices, where necessary, and/or authorising attendance officer to be able to do so
- Working with the parents of pupils with special educational needs and/or disabilities (SEND) to develop specific support approaches for attendance for pupils with SEND, including where school transport is regularly being missed, and where pupils with SEND face in-school barriers
- Communicating with the local authority when a pupil with an education, health and care (EHC) plan has falling attendance, or where there are barriers to attendance that relate to the pupil's needs
- Communicating the school's high expectations for attendance and punctuality regularly to pupils and parents through all available channels

3.3 The designated senior leader responsible for attendance

The designated senior leader (also known as the 'senior attendance champion') is responsible for:

- Leading, championing and improving attendance across the school
- Setting a clear vision for improving and maintaining good attendance
- Evaluating and monitoring expectations and processes
- Having a strong grasp of absence data and oversight of absence data analysis
- Regularly monitoring and evaluating progress in attendance
- Establishing and maintaining effective systems for tackling absence, and making sure they are followed by all staff
- Liaising with pupils, parents/carers and external agencies, where needed
- Building close and productive relationships with parents to discuss and tackle attendance issues
- Creating intervention or reintegration plans in partnership with pupils and their parents/carers
- Delivering targeted intervention and support to pupils and families

The designated senior leader responsible for attendance is Miss Haughton – The Lancaster School, Miss Bingwa – Woodlands Infant and Nursery School, Mr Davies – Birchwood Junior School

3.4 The attendance officer

The school attendance officer is responsible for:

- Monitoring and analysing attendance data (see section 7)
- Benchmarking attendance data to identify areas of focus for improvement

- Providing regular attendance reports to school staff and reporting concerns about attendance to the designated senior leader responsible for attendance, and the headteacher
- Working with education welfare officers to tackle persistent absence
- Advising the headteacher when to issue fixed-penalty notices

The attendance officer is:

The Lancaster School: Natasha Marshall - lancaster@forestskeys.co.uk

Woodlands Infant and Nursery School: Kristy Wright - woodlands@forestskeys.co.uk

Birchwood Junior School: Holly Ballam - birchwood@forestskeys.co.uk

3.5 Class Teachers

Class Teachers are responsible for recording attendance for both morning and afternoon sessions on a daily basis, using the correct codes (see Appendix 1), and submitting this information to the school office. Registers must be completed by 9am and 1:30pm each day.

3.6 School office staff

School office staff will:

- Take calls from parents/carers about absence on a day-to-day basis and record it on the school system
- Transfer calls from parents/carers to the DSL or SENDCo where appropriate, in order to provide them with more detailed support on attendance

3.7 Parents

Where this policy refers to a parent, it refers to the adult the school and/or local authority decides is most appropriate to work with, including:

- All natural parents, whether they are married or not
- All those who have parental responsibility for a child or young person
- Those who have day-to-day responsibility for the child (i.e. lives with and looks after them)

Parents are expected to:

- Make sure their child attends every on time:

The Lancaster School and Woodlands Infant and Nursery School

Start time – 8:45am

Finish time – 3:15pm

Registers taken from 8:45-9am

Late from 9am

Unauthorised from 9:20am.

Birchwood Junior School

Start time – 8:45am

Finish time – 3:15pm

Registers taken from 8:45-9am

Late from 9am

Unauthorised from 9:20am.

- Call the school or report their absence on ParentMail to report their child's absence before 9am on the day of the absence and each subsequent day of absence, and advise when they are expected to return
- Provide the school with more than 1 emergency contact number for their child
- Ensure that, where possible, appointments for their child are made outside of the school day
- Keep to any attendance contracts that they make with the school and/or local authority
- Seek support, where necessary, for maintaining good attendance, by contacting the individual school.

The Lancaster School: 01522 685078 or lancaster@forestskeys.co.uk

Woodlands Infant and Nursery School: 01522 683557 or woodlands@forestskeys.co.uk

Birchwood Junior School: 01522 800971 or birchwood@forestskeys.co.uk

3.8 Pupils

Pupils are expected to:

- Attend school every day, on time

4. Recording attendance

4.1 Attendance register

We will keep an electronic attendance register and place all pupils onto this register.

We will take our attendance register at the start of the first session of each school day and once during the second session. It will mark, using the appropriate national attendance and absence codes from the School Attendance (Pupil Registration) (England) Regulations 2024, whether every pupil is:

- Present
- Attending an approved off-site educational activity

- Absent
- Unable to attend due to exceptional circumstances

Any amendment to the attendance register will include:

- The original entry
- The amended entry
- The reason for the amendment
- The date on which the amendment was made
- The name and position of the person who made the amendment

See Appendix 1 for the DfE attendance codes.

We will also record:

- Whether the absence is authorised or not
- The nature of the activity, where a pupil is attending an approved educational activity
- The nature of circumstances, where a pupil is unable to attend due to exceptional circumstances

We will keep every entry on the attendance register for 6 years after the date on which the entry was made.

The Lancaster School and Woodlands Infant and Nursery School

Start time – 8:45am

Finish time – 3:15pm

Registers taken from 8:45-9am

Late from 9am

Unauthorised from 9:20am.

Birchwood Junior School

Start time – 8:45am

Finish time – 3:15pm

Registers taken from 8:45-9am

Late from 9am

Unauthorised from 9:20am.

4.2 Unplanned absence

The pupil's parent must notify the school of the reason for the absence on the first day of an unplanned absence by 9am or as soon as practically possible, by calling the school office or by recording their child's absence on ParentMail.

We will mark absence due to physical or mental illness as authorised, unless the school has a genuine concern about the authenticity of the illness.

Where the absence is longer than 5 days, or there are doubts about the authenticity of the illness, the school will ask for medical evidence, such as a doctor's note, prescription, appointment card or other appropriate form of evidence. We will not ask for medical evidence unnecessarily.

If the school is not satisfied about the authenticity of the illness, the absence will be recorded as unauthorised and parents will be notified of this in advance.

4.3 Planned absence

Attending a medical or dental appointment will be counted as authorised as long as the pupil's parent notifies the school in advance of the appointment.

However, we encourage parents to make medical and dental appointments out of school hours where possible. Where this is not possible, the pupil should be out of school for the minimum amount of time necessary.

The pupil's parent must also apply for other types of term-time absence as far in advance as possible of the requested absence. Go to section 5 to find out which term-time absences the school can authorise.

4.4 Lateness and punctuality

A pupil who arrives late:

- Before the register has closed will be marked as late, using the appropriate code
- After the register has closed will be marked as absent, using the appropriate code

It is important to be on time, as the first few minutes of the school day are often used to give out instructions or organise school work for the rest of the day. If a pupil misses this short but vital session, their work for the whole day may be affected. Late arrivals are disruptive to the whole class and often unsettling for the child.

Children who arrive late must enter through the main Reception doors and either the parent or the child themselves must sign themselves in (either using the electronic register system or speaking to a member of the office staff) providing an accurate reason for the lateness.

Early collection from school will also be monitored closely and the 'Stages of Monitoring' process will also be followed where early collection is leading to a concern regarding missing learning, impacting negatively upon a child's social interactions and academic progress.

4.5 Following up unexplained absence

Where any pupil we expect to attend school does not attend, or stops attending, without reason, the school will:

- Call the pupil's parent on the morning of the first day of unexplained absence to ascertain the reason. If the school cannot reach any of the pupil's emergency contacts, the school may conduct a home visit or ask the police to conduct a safe and well check.
- Identify whether the absence is approved or not
- Identify the correct attendance code to use and input it as soon as the reason for absence is ascertained – this will be no later than 5 working days after the session(s) for which the pupil was absent
- Call the parent on each day that the absence continues without explanation, to make sure proper safeguarding action is taken where necessary. If absence continues, the school will consider involving an education welfare officer
- Where relevant, report the unexplained absence to the pupil's youth offending team officer
- Where appropriate, offer support to the pupil and/or their parents to improve attendance
- Identify whether the pupil needs support from wider partners, as quickly as possible, and make the necessary referrals

➤ 4.6 Reporting to parents

The school will regularly inform parents (see definition of 'parent', as used in this policy, in section 3.7 above) about their child's attendance and absence levels via half termly traffic light letters.

5. Authorised and unauthorised absence

5.1 Approval for term-time absence

The headteacher will allow pupils to be absent from the school site for certain educational activities, or to attend other schools or settings.

The headteacher will only grant a **leave of absence** to a pupil during term time if the request meets the specific circumstances set out in the [2024 school attendance regulations](#). These circumstances are:

- Taking part in a regulated performance
- A temporary, time-limited part-time timetable
- Exceptional circumstances

A leave of absence is granted at the headteacher's discretion, including the length of time the pupil is authorised to be absent for.

We define 'exceptional circumstances' as: DFE guidelines make clear that leave of absence during term-time should be regarded as exceptional. An example that can be given is that during 2012 London Olympics all police leave was cancelled. As a result for that specific timeframe it was agreed that requests for leave for the children of Police officers affected by

the cancellation of their leave may be considered.

Leave of absence will not be granted for a pupil to take part in protest activity during school hours.

As a leave of absence will only be granted in exceptional circumstances, it is unlikely a leave of absence will be granted for the purposes of a family holiday.

The school considers each application for term-time absence individually, taking into account the specific facts, circumstances and relevant background context behind the request.

Any request should be submitted as soon as it is anticipated and, where possible, at least 4 weeks before the absence. The headteacher may require evidence to support any request for leave of absence.

Other valid reasons for **authorised absence** include (but are not limited to):

- Illness (including mental-health illness) and medical/dental appointments (see sections 4.2 and 4.3 for more detail)
- Religious observance – where the day is exclusively set apart for religious observance by the religious body to which the pupil's parent(s) belong(s). If necessary, the school will seek advice from the parent's religious body to confirm whether the day is set apart
- Parent(s) travelling for occupational purposes – this covers Roma, English and Welsh gypsies, Irish and Scottish travellers, showmen (fairground people) and circus people, bargees (occupational boat dwellers) and new travellers. Absence may be authorised only when a traveller family is known to be travelling for occupational purposes and has agreed this with the school, but it is not known whether the pupil is attending educational provision
- If the pupil is currently suspended or excluded from school (and no alternative provision has been made)

Other reasons the school may allow a pupil to be absent from the school site, which are not classified as absences, include (but are not limited to):

- Attending an offsite approved educational activity, sporting activity or visit or trip arranged by the school
- Attending another school at which the pupil is also registered (dual registration)
- Attending provision arranged by the local authority
- Attending work experience
- If there is any other unavoidable cause for the pupil not to attend school, such as disruption to travel caused by an emergency, a lack of access arrangements, or because the school premises are closed

5.2 Sanctions

Our school will make use of the full range of potential sanctions – including, but not limited to, those listed below – to tackle poor attendance. Decisions will be made on an individual, case-by-case basis.

Penalty notices

The headteacher (or someone authorised by them), local authority or the police can fine parents for the unauthorised absence of their child from school, where the child is of compulsory school age, by issuing a penalty notice.

If the school issues a penalty notice, it will check with the local authority before doing so and send it a copy of any penalty notice issued.

Before issuing a penalty notice, the school will consider the individual case, including:

- Whether the national threshold for considering a penalty notice has been met (10 sessions of unauthorised absence in a rolling period of 10 school weeks)
- Whether a penalty notice is the best available tool to improve attendance for that pupil
- Whether further support, a notice to improve or another legal intervention would be a more appropriate solution
- Whether any obligations that the school has under the Equality Act 2010 make issuing a penalty notice inappropriate

Each parent who is liable for the pupil's offence(s) can be issued with a penalty notice, but this will usually only be the parent/parents who allowed the absence.

The payment must be made directly to the local authority, regardless of who issues the notice. If the payment has not been made after 28 days, the local authority can decide whether to prosecute or withdraw the notice.

If issued with a **first** penalty notice, the parent must pay £80 within 21 days, or £160 within 28 days.

If a **second** penalty notice is issued to the same parent in respect of the same pupil, the parent must pay £160 if paid within 28 days.

A **third** penalty notice cannot be issued to the same parent in respect of the same child within 3 years of the date of the issue of the first penalty notice. In a case where the national threshold is met for a third time within those 3 years, alternative action will be taken instead.

A penalty notice may also be issued where parents allow their child to be present in a public place during school hours without reasonable justification, during the first 5 days of a suspension or exclusion (where the school has notified the parents that the pupil must not be present in a public place on that day). These penalty notices are not included in the National Framework, not subject to the same considerations about support being provided, and do not count towards the limit as part of the escalation process.

In these cases, the parent must pay £60 within 21 days, or £120.

Notices to improve

If the national threshold has been met and support is appropriate, but parents do not engage with offers of support, the school may offer a notice to improve to give parents a final chance to engage with support.

Notices to improve will be issued in line with processes set out in the local code of conduct for the local authority area in which the pupil attends school.

They will include:

- Details of the pupil's attendance record and of the offences
- The benefits of regular attendance and the duty of parents under [section 7 of the Education Act 1996](#)
- Details of the support provided so far
- Opportunities for further support, or to access previously provided support that was not engaged with
- A clear warning that a penalty notice may be issued if attendance doesn't improve within the improvement period, along with details of what sufficient improvement looks like, which will be decided on a case-by-case basis
- A clear timeframe of between 3 and 6 weeks for the improvement period
- The grounds on which a penalty notice may be issued before the end of the improvement period

6. Strategies for promoting attendance

Parents can support regular school attendance by:

- Making sure their child leaves for school with plenty of time to arrive on time.
- Supporting and encouraging their child by attending parent's evenings and other events.
- Contacting the school to discuss any concerns regarding their child's attendance.
- Working in partnership with the school to resolve any issues that are impacting on their child's attendance

School can support regular attendance by:

- Working with parents / carers with regular communication about attendance.
- Rewards such as certificates and trips e.g. Active Nation climbing wall
- Providing a Breakfast Club that encourages children to start their day in the right manner as well as an after school club to eliminate the need for early collections.
- The use of different strategies such as class incentives and timetabled activities
- Parental workshops to discuss the impact of poor attendance.
- Promoting positive attendance at all times
- Children who maintain 100% attendance for their whole time at the school will receive a special award
- The class with the highest attendance each week will have the 'Best Attendance' plaque on their classroom door (KS2) or the 'Best Attendance Bear' (KS1) join their class for the following week

- Each large term there will be voucher/ prize raffle for those children who have had 100% attendance
- The Attendance Officer, DSL's, FSW and SENCo will support families through Early Help Assessments and where necessary the Team Around the Child process to promote positive attendance

7. Attendance monitoring

- The attendance officer monitors pupil absence on a weekly, termly and annually basis.
- Parents are expected to call or send a ParentMail to the school in the morning if their child is going to be absent due to ill health (Section 3.2)
- Parents are expected to call school every day their child is absent from school.
- If a pupil's absence (illness) goes above 4 days we will contact the parents to discuss the reasons for this.
- If after contacting parents a pupil's absence continues to rise, we will consider involving an education welfare officer.
- The persistent absence threshold is 10%. If a pupil's individual overall absence rate is greater than or equal to 10%, the pupil will be classified as a persistent absentee.
- Pupil-level absence data is collected each term and published at national and local authority level through the DfE's school absence national statistics releases. The underlying school-level absence data is published alongside the national statistics.
- Attendance data is compared to the national average and shared with governors.

All absence data is recorded on the school's MIS system and reports are generated in line with the correct absence monitoring. All absence data is securely stored through encryption via the school server which is securely backed up to the cloud. Only relevant and correct absence data is sent to parents in relation to their child/children. The school publishes overall absence percentages on its website, no formal names are given.

7.1 Monitoring attendance

The school will monitor attendance and absence data (including punctuality) half-termly, termly and yearly across the school and at an individual pupil, year group and cohort level.

Specific pupil information will be shared with the DfE on request.

The school has granted the DfE access to its management information system so that data can be accessed regularly and securely.

Data will be collected each term and published at national and local authority level through the DfE's school absence national statistics releases. The underlying school-level absence data is published alongside the national statistics.

The school will benchmark its attendance data at whole school, year group and cohort level against local, regional, and national levels to identify areas of focus for improvement, and share this with the governing board.

7.2 Analysing attendance

The school will:

- Analyse attendance and absence data regularly to identify pupils, groups or cohorts that need additional support with their attendance, and
- Identify pupils whose absences may be a cause for concern, especially those who demonstrate patterns of persistent or severe absence
- Conduct thorough analysis of half-termly, termly, and full-year data to identify patterns and trends
- Look at historic and emerging patterns of attendance and absence, and then develop strategies to address these patterns

7.3 Using data to improve attendance

The school will:

- Develop targeted actions to address patterns of absence (of all severities) of individual pupils, groups or cohorts that it has identified via data analysis
- Provide targeted support to the pupils it has identified whose absences may be a cause for concern, especially those who demonstrate patterns of persistent or severe absence and their families (see section 8.4 below)
- Provide regular attendance reports to class teachers to facilitate discussions with pupils and families, and to the governing board and school leaders
- Use data to monitor and evaluate the impact of any interventions put in place in order to modify them and inform future strategies
- Share information and work collaboratively with other schools in the area, local authorities and other partners where a pupil's absence is at risk of becoming persistent or severe, including keeping them informed regarding specific pupils, where appropriate

7.4 Reducing persistent and severe absence

Persistent absence is where a pupil misses 10% or more of school and severe absence is where a pupil misses 50% or more of school. Reducing persistent and severe absence is central to the school's strategy for improving attendance.

The school will:

- Use attendance data to find patterns and trends of persistent and severe absence
- Consider potential safeguarding issues and, where suspected or present, address them in line with Keeping Children Safe in Education
- Hold regular meetings with the parents of pupils who the school (and/or local authority) considers to be vulnerable or at risk of persistent or severe absence, or who are persistently or severely absent, to:
 - Discuss attendance and engagement at school
 - Listen and understand barriers to attendance
 - Explain the help that is available

- Explain the potential consequences of, and sanctions for, persistent and severe absence
 - Review any existing actions or interventions
- Provide access to wider support services to remove the barriers to attendance, in conjunction with the local authority, where relevant
- Consider alternative support that could be put in place to remove any barriers to attendance and re-engage these pupils. In doing so, the school will sensitively consider some of the reasons for absence
- Implement sanctions, where necessary (see section 5.2, above)

8. Monitoring arrangements

This policy will be reviewed as guidance from the local authority and/or DfE is updated, and on a yearly basis. At every review, the policy will be approved by the full governing board.

9. Links with other policies

This policy links to the following policies:

- Child protection and safeguarding policy
- Behaviour policy

Appendix 1: attendance codes

The following codes are taken from the DfE's [guidance on school attendance](#).

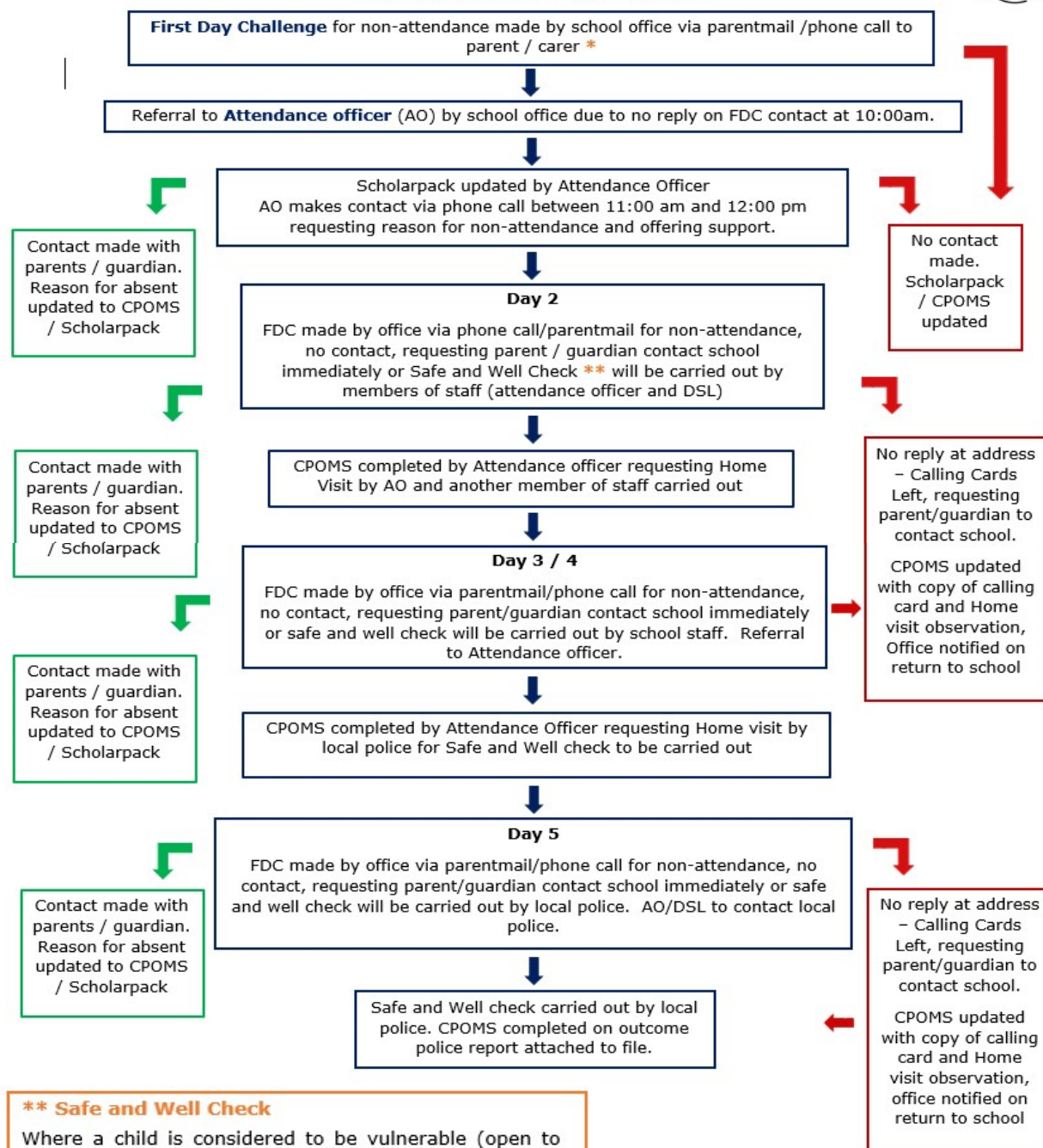
Code	Definition	Scenario
/	Present (am)	Pupil is present at morning registration
\	Present (pm)	Pupil is present at afternoon registration
L	Late arrival	Pupil arrives late before register has closed
Attending a place other than the school		
K	Attending education provision arranged by the local authority	Pupil is attending a place other than a school at which they are registered, for educational provision arranged by the local authority
V	Attending an educational visit or trip	Pupil is on an educational visit/trip organised or approved by the school
P	Participating in a sporting activity	Pupil is participating in a supervised sporting activity approved by the school
W	Attending work experience	Pupil is on an approved work experience placement
B	Attending any other approved educational activity	Pupil is attending a place for an approved educational activity that is not a sporting activity or work experience
D	Dual registered	Pupil is attending a session at another setting where they are also registered
Absent – leave of absence		
C1	Participating in a regulated performance or undertaking regulated employment abroad	Pupil is undertaking employment (paid or unpaid) during school hours, approved by the school
M	Medical/dental appointment	Pupil is at a medical or dental appointment
J1	Interview	Pupil has an interview with a prospective employer/educational establishment

S	Study leave	Pupil has been granted leave of absence to study for a public examination
X	Not required to be in school	Pupil of non-compulsory school age is not required to attend
C2	Part-time timetable	Pupil is not in school due to having a part-time timetable
C	Exceptional circumstances	Pupil has been granted a leave of absence due to exceptional circumstances
Absent – other authorised reasons		
T	Parent travelling for occupational purposes	Pupil is a ‘mobile child’ who is travelling with their parent(s) who are travelling for occupational purposes
R	Religious observance	Pupil is taking part in a day of religious observance
I	Illness (not medical or dental appointment)	Pupil is unable to attend due to illness (either related to physical or mental health)
E	Suspended or excluded	Pupil has been suspended or excluded from school and no alternative provision has been made
Absent – unable to attend school because of unavoidable cause		
Q	Lack of access arrangements	Pupil is unable to attend school because the local authority has failed to make access arrangements to enable attendance at school
Y1	Transport not available	Pupil is unable to attend because school is not within walking distance of their home and the transport normally provided is not available
Y2	Widespread disruption to travel	Pupil is unable to attend because of widespread disruption to travel caused by a local, national or international emergency
Y3	Part of school premises closed	Pupil is unable to attend because they cannot practicably be accommodated in the part of the premises that remains open

Y4	Whole school site unexpectedly closed	Every pupil absent as the school is closed unexpectedly (e.g. due to adverse weather)
Y5	Criminal justice detention	<p>Pupil is unable to attend as they are:</p> <ul style="list-style-type: none"> • In police detention • Remanded to youth detention, awaiting trial or sentencing, or • Detained under a sentence of detention
Y6	Public health guidance or law	Pupil's travel to or attendance at the school would be prohibited under public health guidance or law
Y7	Any other unavoidable cause	To be used where an unavoidable cause is not covered by the other codes
Absent – unauthorised absence		
G	Holiday not granted by the school	Pupil is absent for the purpose of a holiday, not approved by the school
N	Reason for absence not yet established	Reason for absence has not been established before the register closes
O	Absent in other or unknown circumstances	No reason for absence has been established, or the school isn't satisfied that the reason given would be recorded using one of the codes for authorised absence
U	Arrived in school after registration closed	Pupil has arrived late, after the register has closed but before the end of session
Administrative codes		
Z	Prospective pupil not on admission register	Pupil has not joined school yet but has been registered
#	Planned whole-school closure	Whole-school closures that are known and planned in advance, including school holidays

Appendix 2

Attendance Monitoring Procedures Forest Skies Federation



** Safe and Well Check

Where a child is considered to be vulnerable (open to Children's Services, a TAC or EHA) and not been seen by the school for 48 hours a home visit will be carried out by the attendance officer and a DSL.

* Separated parents

When a child is absent FDC to be made to both parents providing there are no contract restrictions highlighted on Scholarpack – check with a DSL if necessary.

Appendix 3: Example leave of absence request form.

APPLICATION FOR LEAVE OF ABSENCE FROM SCHOOL DURING TERM TIME			
<p>Important information for parents – please read before completing this form</p> <p>Working together to improve school attendance advises all schools that they should only grant a leave of absence during term time in exceptional circumstances, considering each request on a case-by-case basis. If a leave of absence is granted, it is for the headteacher to determine the length of time the pupil can be away from school. Although we recognise the value and benefits of family holidays, it is unlikely a leave of absence will be granted for a family holiday as the Government ‘does not consider a need or desire for a holiday or other absence for the purpose of leisure and recreation to be an exceptional circumstance’.</p> <p>Requests for leave must be made in advance, otherwise we will be unable to consider your individual circumstances and the absence will be recorded as unauthorised. Headteachers are not obligated to reconsider authorising leave if an application was not made in advance.</p> <p>Our aim is for every pupil’s attendance to be 100% unless there are exceptional or unavoidable reasons for absence. If you require any support with ensuring your child’s attendance, please contact the school on 01522 685078 or via email at lancaster@forestsksies.co.uk</p>			
I have read the above information and wish to apply for leave of absence from school for:			
Child’s Full Name:	Date of Birth:	Class:	
Parent/Carer Details (please list all parents)			
First Name:		Surname:	
Date of Birth:		Relationship to the child:	
Address and postcode:			
Telephone number:			
First Name:		Surname:	
Date of Birth:		Relationship to the child:	
Address and postcode:			
Telephone number:			
Details of the absence			
Date of First day of absence:		Date of last day of absence:	
Total Number of days absent:		Expected date of return to school:	
Please provide the reason for this request including supporting evidence:			

--

Please read the following statement and sign to indicate you understand the this:

I would like to request the above absence. I understand that the school strongly advises against taking unnecessary absence during term time and accept that this may have a detrimental impact on my child/ren's progress. I understand that a penalty notice may be issued if this request is denied, and my child is absent during this period. I understand that a fine will be payable per parent, per child.

I have read and understood Lincolnshire County Council's information regarding penalty notices for absence from school and the action they may take.

Signed:		Full name:		Date:	
Signed:		Full name:		Date:	

To be completed by the school:			
Date request received by the school:		Total number of days requested:	
Child's Name:		Application Authorised or Declined?	
Reason for school's decision:			
In the case of a term time holiday please confirm which parent took the holiday:			
Headteacher:			
Signed:		Date:	